

Cerebral Palsy Johor

ANNUAL REPORT

2020/2021



CEREBRAL PALSY JOHOR



Cerebral Palsy Johor cares and provides education and services for children and adults with Cerebral Palsy – a disorder caused by damage to the brain.

There are about 130 children and adults with cerebral palsy housed at the association, and they are all provided with special education, rehabilitation skill training (vocational) and sheltered workshop for the adults.

Name : Persatuan Cerebral Palsy Johor
Address : 138, Jalan Dato' Menteri, 80100 Johor Bahru, Johor
Tel : 07-223 5452/2264380
Fax : 07-2234029
Email : support@cpjohor.com
Facebook : www.facebook.com/johorcp
Instagram : instagram.com/persatuancpj

CHAIRMAN'S MESSAGE



*“Why can't my baby hold up his head?”,
“Why can't she stop drooling?”,
“Why can't he walk?”, “Why can't she speak?”*

Why? Why? Why? These are just some questions we hear from parents when they bring their precious ones. At CPJ, we try to answer their questions. We try to reassure parents that there is hope.

The then Johor Spastic Association was formed in 1967 by Dr. Samuel Abraham who was deeply concerned that children born with cerebral palsy needed to have proper care and services for their physical and mental health.

Today we have 74 pupils in our school. We have 25 people who come in for our outpatient physiotherapy and we have a workshop that employs 23 people with cerebral palsy. The numbers are growing and will continue to do so. We are proud to say that we have the best facilities in the country.

What is our challenge? As with all NGO's, it's our financial situation. We need to pay our teachers, therapists, administrative and maintenance staff a decent wage. We need to maintain our classrooms and our therapy rooms. We are an organisation that's completely reliant on public donations and government grants.



We want to provide the best for children with cerebral palsy but we want to keep our fees affordable. We will never turn away any child either for education or for therapy. We want to help them to grow and be a part of society.

Thus we appeal to the public to support us. Your support will help these children to live their full potential.

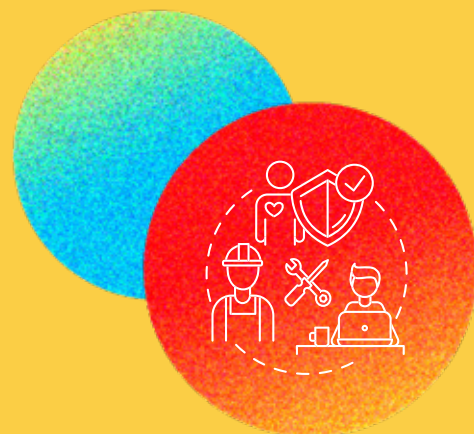
Sincerely,
Tunku Fatimah Faridah Osman
Chairman of Johor Cerebral Palsy Association

CEREBRAL PALSY JOHOR

Previously known as the **Spastic Association of Johor**, our mission is to **improve the quality of life** of all children in Johor living with cerebral palsy.

Everything we do is underpinned by our core values to promote the sharing of **knowledge and ideas, quality training, rehabilitation and habilitation** of children and young adults with cerebral palsy as well as a variety of other developmental disabilities.

People whose lives are affected by cerebral palsy know they can count on us to be here when it matters most.



*Sharing of
Knowledge & Ideas*

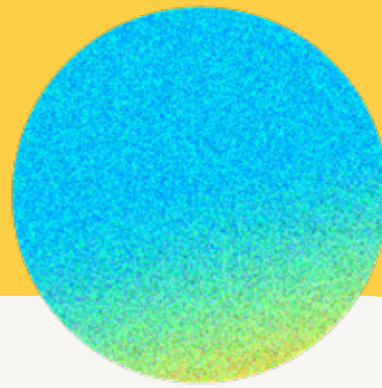
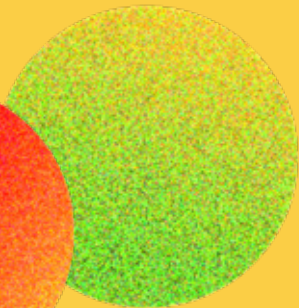
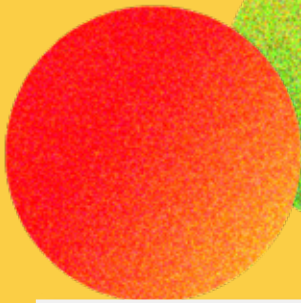


*Rehabilitation
& Habilitation*



*Quality
Training*

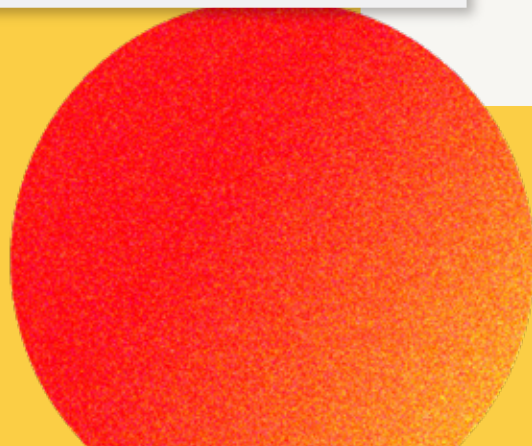




+ **LEFT:** Students at CPJ enjoy a game of congkak during their school sports day.



+ **LEFT:** A CPJ staff member entertaining some students with balloon animals during a CPJ event.



MILESTONES OF CPJ

1967

The Spastic Children's Association of Johor is founded by Datuk Dr. Samuel Clifford Ethermanasingam Abraham (Datuk Dr. S.C.E. Abraham)



1970

The Association moves into a permanent residence at 138, Jalan Dato Mentari

1988

The Association becomes one of the founding members of National Spastic Children's Association

+ OUR HISTORY

The Spastic Children's Association of Johor was formed in 1967. Having started with only 8 children in a borrowed premise at the Jubilee Home, today the Association has its own premise and caters to the special needs of 120 children and young adults challenged with Cerebral Palsy (CP).

The Association takes pride in being a leading service provider in the state of Johor, offering professional integrated programs and services for these special children.

+ OUR FOUNDER

One man's vision, mission and dedication led to the birth of Johor Cerebral Palsy Association. Datuk Dr. Samuel Clifford Ethermanasingam Abraham (Datuk Dr. S.C.E. Abraham) was a committed social activist all his life, and one of the hallmarks of his career and his life was the additional work he conducted in parallel with his paediatric duties.

After considerable fundraising efforts, his vision became a reality with the opening of Johor Cerebral Palsy Association in 1967. Over the years, the association has been championed and supported by a stellar list of leaders, organisations, and corporate entities, growing from strength to strength.

1992

A proper school with 8 classrooms, 3 rehabilitation units with hydrotherapy pool was built



2013

Students participate in the Setia Eco Walkathon

2019

Student Mohammad Syafiq Mohd Noh represents Malaysia at the BISFed 2019 Guangzhou Boccia Regional Open



2020

Student Chew Wei Lun qualifies for the Tokyo Paralympics



2020

Former Student En. Al Asyraf becomes an official Board Member

MEET THE BOARD

Our new board of directors are comprised of community leaders who help guide the Association, ensuring we remain focused on the achievement of our core mission.



YBM. Tunku Fatimah Faridah binti Tunku Osman

CHAIRMAN



Dr. Ballan Kannan

DEPUTY CHAIRMAN



En. Tan Boon Kok

HONORARY TREASURER



En. Allan Peter Fernandez

HONORARY SECRETARY



En. Yazid bin Mohamed

DIRECTOR



Dr. Santhi Sivalingamoorthy

DIRECTOR



Pn. Sukhjot Kaur S. Nazar Singh, SMJ

DIRECTOR



Cik Foo Geok Jin

DIRECTOR



Cik Lekha Nandey a/p S.P. Nandey

DIRECTOR



Ts. Ir. Choo Kok Wah

DIRECTOR



Ts. Dr. Md. Rajuna bin Ahmad Shakri

DIRECTOR



En. Al Asryaf bin Zulkefli

DIRECTOR

FUTURE HIGHLIGHTS

A small donation is worth more than you think. Here's how you will be contributing.

OPERATIONAL COSTS

**RM1.8M
PER YEAR**

The government contributes less than 25% of the operational cost.

CP Johor relies on internal income, public donations & fundraising projects to meet the yearly financial constraints.

THERAPY TOOLS AND ASSISTIVE EQUIPMENT BUDGET

RM4.4K

Our students require specialised equipment for Occupational, Hydro, Physio, and Speech Therapy.

CUSTOMISED FURNITURE

RM50K

We need to replace worn out and unsuitable furniture with customised chairs, desks, stools, etc for the comfort and safety of our students.

LIBRARY AND EDUCATIONAL MATERIALS

RM30K

To cultivate an interest in literacy and knowledge, as well as offering parents and students a vast array of resources and references.

CUSTOMISED KITCHEN APPLIANCES

RM30K

To teach CP students from Vocational and Pre-vocational classes culinary skills.

COMPUTER SOFTWARE BUDGET

RM50K

CP Johor is pushing the train and equip CP children with useful IT and coding skills.

MUSIC THERAPY INSTRUMENTS AND EQUIPMENT

RM30K

Using specialised instruments to strengthen and reinforce areas of speech, cognitive abilities, and motor coordination.

LET'S BUILD A BETTER FUTURE TOGETHER

Cerebral palsy is the most common childhood physical disability, with those affected needing intensive therapy and education from a young age.

Just RM30 a month goes a long way to provide the support they need to live and enjoy life today and in the future. Your small contribution allows CP Johor to keep up with the latest research, medicine and educational techniques to provide better care and quality of life to our children.

CP Johor relies on the generosity of its community to support its mission and programmes to create a world without limits for people with disabilities.



Scan QR Code to Donate



Please donate to the following bank details

**PERSATUAN CERBRAL
PALSY JOHOR**

**Maybank Account.
501011990533**

*All Donations RM50.00 and above are **TAX EXEMPTED** as approved by the Inland Revenue Department*

(Tax ID: 13-6093337)



friends^{of} CP

Cerebral palsy is a group of disorders that are discovered during pregnancy, at birth or a young age, and lasts for life. It is caused by an underdevelopment or damage to the part of the brain that controls movements, balance, and posture. In cases where the damage is severe, it can also cause feeding problems, as well as affect speech, hearing and visual impairment.

While those affected may struggle to do the physical things we take for granted, they are blessed with extraordinary and curious minds. Imagine overcoming the odds and having so much to say and achieve! They are our reason to do what we do.

We are proud to say that CPJ has consistently provided some of the best integrated services and facilities for children and adults living with CP. While we are a recognised government-accredited NGO, the national funding dedicated to CP education and rehabilitation remains extremely limited. To carry out our important work, we seek to partner with passionate individuals and businesses such as yourselves.

With the full support and long term vision of our President, YAB Menteri Besar of Johor, CPJ aims to become a self-sustainable organisation. We invite the collaboration of

selected corporate CSR teams under a pilot program: **"FRIENDS OF CEREBRAL PALSY JOHOR"**.

The collaboration is designed to be part of a CSR project and can be tailored to companies for a mutually rewarding business relationship. Our YAB Menteri Besar has also proposed the formation of "CPJ Business Advisory Council", comprise of a select team of influential CEOs, and headed by the YAB Menteri Besar himself.

It is our great honour and pleasure to invite you to be part of this project. To kick-start our future collaboration, we welcome you and your team to tour our school and premises, so as to better understand the facilities and services we provide.

Kindly note that all forms of monetary contributions to the Association, including of those generated from the proposed CSR and business collaboration activities, will be **tax-exempted** (under the approval granted to the Association via Government Gazette No: 3917).

We hope to hear from you soon and we look forward to welcoming you as Friend of Cerebral Palsy Johor.

The Johor Cerebral Palsy Association (CPJ) is committed to improving the quality of life and the futures of children with Cerebral Palsy (CP), including their rights to conductive education and therapies.

Cerebral palsy is a group of disorders that are discovered during pregnancy, at birth or a young age, and lasts for life. It is caused by an underdevelopment or damage to the part of the brain that control movements, balance, and posture. In cases where the damage is severe, it can also cause feeding problems, as well as affect speech, hearing and visual impairment.

CP is the most common childhood disability, yet still lacks awareness.

With your help, we can change that.

Name: Persatuan Cerebral Palsy Johor
Address: 138, Jalan Dato' Menteri, 80100 Johor Bahru, Johor
Tel: 07-223 5452/2264380
Fax: 07-2234029
Email: support@cpjohor.com
Facebook: www.facebook.com/johorcp
Instagram: instagram.com/persatuancpj



CEREBRAL PALSY JOHOR